

PRIME RESEARCH

Empowering decisions

Prime Daily

January 23, 2025





S&P 500 hits fresh highs

Wall Street's indexes rose on Wednesday, with the benchmark S&P 500 hitting an intraday record high. Investors cheered streaming video provider Netflix's quarterly report and President Donald Trump's private-sector artificial intelligence infrastructure investment plan.

US President Donald Trump announced a groundbreaking joint venture, Stargate, with OpenAI, Oracle, and Softbank. The venture will commit up to \$500 billion over four years to advance AI infrastructure in the US. Key partners like Microsoft, Nvidia, and Arm are expected to join the initiative, with initial operations beginning in Texas. Shares of Oracle were higher by roughly 7% in response, and technology was the top-performing sector of the S&P 500 by a wide margin.

The German DAX index resumed its record-breaking rally and surged to fresh all-time highs on the possible loosening of the debt brake, the hope of ECB rate cuts, and China stimulus.

The Bank of Japan is expected to raise its policy rate by 25 bps to 0.50% today.

U.S. President Donald Trump on Wednesday threatened Russia "and other participating countries" with taxes, tariffs, and sanctions if a deal to end the war in Ukraine is not struck soon.

Asian markets opened on a positive note following gains in Western markets.

Nifty saw a pullback of 136 points in a volatile session that eventually ended in the green, led by gains in heavyweight sectors such as Information Technology (IT) and banking. Nifty managed to protect lows of 22976, which will serve as the stop loss for long positions. On the higher side, 23300-23400 could offer resistance. Sharp selling continued in broader markets, and breadth deteriorated further. Foreign investors also sold equities worth 4,000 Cr. in yesterday's markets.

Indian markets are likely to open subdued today despite positive global cues as foreign investors continue to offload Indian stocks incessantly.



Global Equity Indices

	Close	Abs. Change	% Change
Indian Indices			
Sensex	76,405	566.6 ▲	0.75%
Nifty	23,155	130.7 ▲	0.57%
Midcap	53,114	-721.4 ▼	-1.34%
Small cap	17,173	-284.0 ▼	-1.63%
US Indices			
Dow Jones	44,157	130.9 ▲	0.30%
S&P 500	6,086	37.1 ▲	0.61%
Nasdaq	20,009	252.6 ▲	1.28%
European Indices			
FTSE	8,545	-3.2 ▼	-0.04%
DAX	21,254	212.3 ▲	1.01%
CAC	7,837	66.4 ▲	0.86%
Asian Indices			
Shanghai	3,240	-2.6 ▼	-0.08%
Hang Seng	19,795	-311.1 ▼	-1.55%
Nikkei	39,830	802.1 ▲	2.06%

Indices Futures

	Close	Abs. Change	% Change
Indian Indices			
IFSC Nifty	23,136	-53 ▼	-0.23%
US Indices			
Dow Jones	44,331	-22.0 ▼	-0.05%
S&P 500	6,113	-7.5 ▼	-0.12%
Nasdaq	21,952	-48.5 ▼	-0.22%
European Indices			
FTSE	8,513	-27.5 ▼	-0.32%
DAX	21,365	-14.0 ▼	-0.07%
Asian Indices			
Shanghai	3,803	17.2 ▲	0.45%
Hang Seng	19,827	-19.0 ▼	-0.10%
Nikkei	39,890	310.0 ▲	0.78%

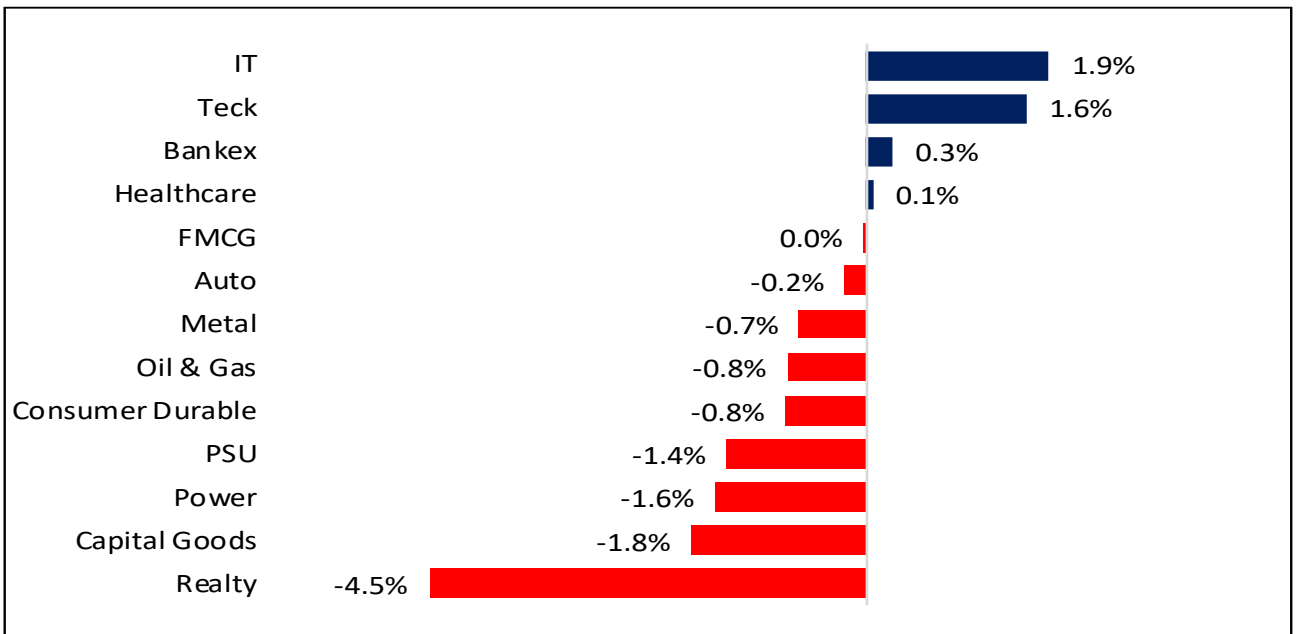


Nifty50 Index Contributors

Top Five (Positive Contributors)		
Stock	Points	%
INFY	44.7	0.19%
HDFCBANK	40.1	0.17%
TCS	27.5	0.12%
SUNPHARMA	8.7	0.04%
KOTAKBANK	7.9	0.03%

Bottom Five (Negative Contributors)		
Stock	Points	%
TATAMOTORS	-8.4	-0.04%
AXISBANK	-6.9	-0.03%
BEL	-6.9	-0.03%
LT	-6.0	-0.03%
TRENT	-5.5	-0.02%

BSE Sectoral Leaders & Laggards



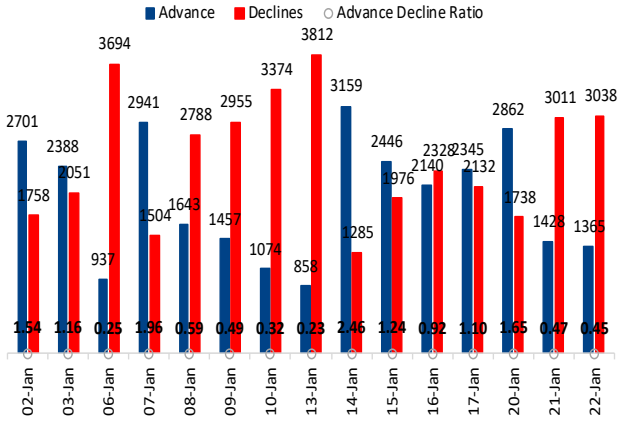
Nifty50 Index Top Pops and Drops

Nifty50 Top Five Gainers			
Symbol	LTP	% Change	Volume
WIPRO	309.9	3.87%	30,859,317
INFY	1,855.0	3.02%	8,373,913
TCS	4,152.0	2.88%	2,409,223
TECHM	1,679.2	2.36%	2,478,559
HDFCBANK	1,671.9	1.80%	15,309,653

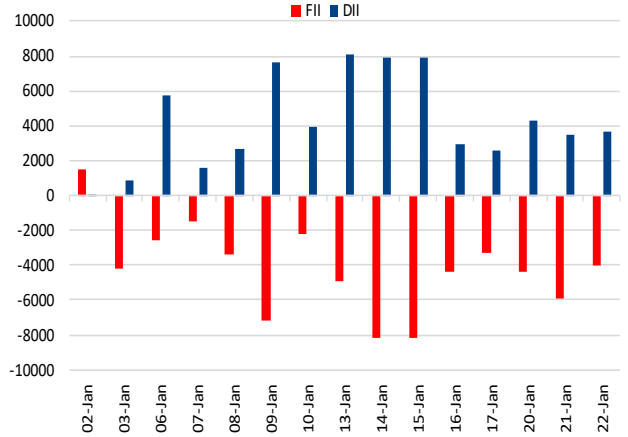
Nifty50 Top Five Losers			
Symbol	LTP	% Change	Volume
BEL	270.6	-3.01%	21,272,549
TATAMOTORS	744.4	-2.16%	12,418,474
TRENT	5,624.8	-1.95%	1,377,528
POWERGRID	298.4	-1.31%	9,723,333
AXISBANK	959.6	-1.09%	17,303,146



BSE Advance & Declines



Institutional Activities



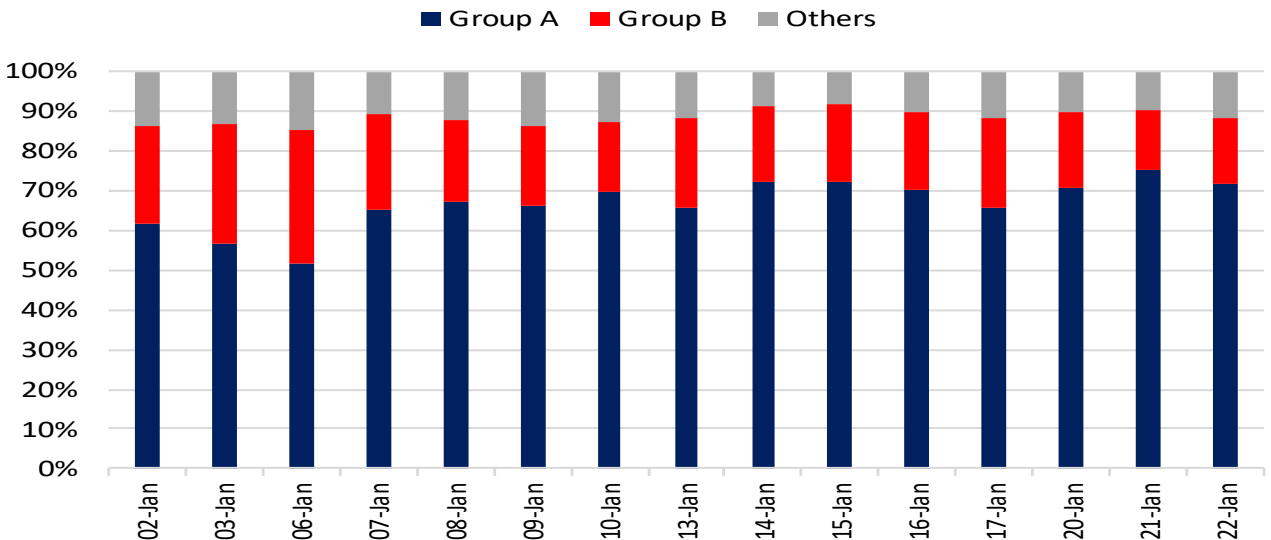
52 Week High Stocks

	22-Jan-25	21-Jan-25
BSE Universe	115	144
BSE Group A Stocks Hitting 52 Week High		
Stocks	Price	52 Week High
PARADEEP	126.00	130.45

52 Week Low Stocks




	22-Jan-25	21-Jan-25
BSE Universe	169	78
BSE Group A Stocks Hitting 52 Week Low		
Stocks	Price	52 Week Low
AHLUCONT	799.35	776.5
GPPL	156.45	154.3
ACI	576.9	569
PRSMJOHNSN	143.6	141.4
BATAINDIA	1276.5	1261.75

BSE Cash Market Turnover Participant-wise





News Highly Sensitive to Stock Price

Impact	Stock	News
	Zydus Lifesciences Ltd.	<p>The company announced that the US FDA has granted Orphan Drug Designation (ODD) to Usnoflast, a novel oral NLRP3 inhibitor, for the treatment of amyotrophic lateral sclerosis (ALS). The USFDA's Office of Orphan Drug Products grants orphan status to support development of medicines for the treatment of rare diseases that affect fewer than 200,000 people in the United States.</p> <p>Usnoflast (ZYIL1) is a novel, oral small molecule NLRP3 inhibitor. Usnoflast has been studied in several pre-clinical models of neuroinflammation, Parkinson's disease, Inflammatory Bowel Disease (IBD) and Multiple Sclerosis (MS).</p>
	Gravita India	Gravita India: Revenue up 31% at Rs 996 crore. EBITDA margin stood at 8.1% vs. 10.6%. Net profit was up 29% at Rs 77.9 crore. Other Income was higher by 90% YoY at Rs 28.9 crore.
	Hindustan Unilever	<p>Revenue up 1.6% at Rs 15,818 crore. EBITDA margin stood at 23.4% vs. 23.5%. Net profit was up 18.9% at Rs 2,984 crore. Exceptional items at Rs 507 crore vs. a loss of Rs 30 crore.</p> <p>It would acquire 90.5% stake in cosmetic brand 'Minimalist' at an enterprise value of Rs 2,955 crore. Approves demerger plan between the company and Kwalita Walls India for the ice-cream business.</p>



Stock	News
Sammaan Capital	Sammaan Capital's board of directors and shareholders authorised the issue of a qualified institutional placement for the total issue size of Rs 1727.5 crore. The floor price of the issue was Rs 151.09 per equity share. The base size was determined to be Rs 1,300 crore. The QIP has a green shoe option of Rs 427.5 crore.
Reliance Inds	Reliance Consumer Products Ltd (RCPL), the consumer goods arm of Reliance Industries Ltd (RIL), announced on its acquisition of SIL, a food brand known for sauces and condiments.
Bharat Petroleum Corp (BPCL)	BPCL plans to invest \$121 million to develop the Nunukan oil and gas block in Indonesia. BPCL's exploration unit, Bharat PetroResources, holds a 16.23% stake in the Nunukan block, operated by Indonesia's national oil company, Pertamina.
Oil & Gas	India's gas use surged 11% in 2024, boosting LNG imports to satisfy growing demand. Industries and oil refineries led the increase, but homes, businesses, and transportation also saw double-digit growth due to relatively lower imported gas prices, according to an International Energy Agency (IEA).
Zensar Tech Q3FY25 results key takeaway	<p>Reported Numbers: Zensar Tech reported inline numbers with estimates in Q3FY25. Consolidated revenue grew by 1.4% QoQ and 10.1% YoY to Rs 1326 crore in Q3FY25. In Q3FY25, the company reported revenue of \$157 mn, a YoY growth of 8.6% in reported currency and 7.5% in constant currency. This translates to QoQ growth of 0.5% in reported currency and 0.7% in constant currency.</p> <p>EBIT rose 7% QoQ, and 4% YoY to Rs 183 crore in Q3FY25. EBIT margin increased to 13.8% in Q3FY25 vs. 13.1% in Q2FY25 and 14.6% in Q3FY24. Net profit was at Rs 160 crore in Q3FY25. It was Rs 156 crore in Q2FY25 and Rs 162 crore in Q3FY24.</p> <p>Order book and Client's Metrics: Order wins stood at \$ 205.3 mn in Q3FY25, vs. \$ 202 mn in Q2FY25 and \$154 mn in Q1FY25. Number of active clients was at 158 in Q3FY25 vs. 158 in Q2FY25 vs. 148 in Q1FY25.</p> <p>Earnings and valuation: Earnings per share was at Rs 7 in Q3FY25, Rs 6.8 in Q2FY25, and Rs 6.9 in Q1FY25. At a LTP, the stock is trading at 19.8x FY27E EPS.</p>



Stock	News
<p>Persistent Systems Q3FY25 results key takeaways</p> <p>Persistent Systems revenue was inline with estimates and net profit was above expectations in Q3FY25, delivered another strong quarter, driven by significant traction in client portfolio globally.</p>	<p>Reported numbers: Consolidated revenue grew by 5.7% QoQ and 22.6% YoY to Rs 3,062 crore in Q3FY25, driven by broad-based growth in segments and geographies. Revenue in USD terms was up by 4.3% QoQ and 19.9% YoY to US\$ 360.2 mn.</p> <p>EBIT surged by 12.2% QoQ and 25.5% YoY to Rs 456 crore. EBIT margin increased 90bps QoQ and stood at 14.9% in Q3FY25 vs. 14.5% in Q3FY24. Net Profit grew 14.8% QoQ and 30.4% YoY to Rs 373 crore.</p> <p>Operating metrics: On segment front, revenue contribution from BFSI stood at 31.7% in Q3FY25 vs. 31.5% in Q2FY25, revenue from Healthcare and life science stood at 27.8% in Q3FY25 vs. 27.8% in Q2FY25, and Software, Hi-Tech & Emerging Industries revenue stood at 40.5% in Q3FY25 vs. 40.7% in Q2FY25.</p> <p>On geography mix, US contributed 80.5%, Europe 8.2%, India 9.4% and RoW 1.9% in Q3FY25. US contributed 81.3%, Europe 7.9%, India 9.2% and RoW 1.6% in Q2FY25.</p> <p>Total Contract Value: Trailing Twelve Month (TCV) stood at US\$ 594.1 mn in Q3FY25, vs. US\$ 529 mn in Q2FY25, US\$ 462.8 mn in Q1FY25, and US\$ 447.7 mn in Q4FY24. New order book (TTM) booked at US\$ 428.3 in Q3FY25 vs. US\$ 348.3 mn in Q2FY25 vs. US\$ 310.8 mn in Q1FY25, and US\$ 302 mn in Q4FY24.</p> <p>Earning and valuation: Earnings per share was at Rs 23.9 in Q3FY25, Rs 21 in Q2FY25, and Rs 19.9 in Q1FY25 and at a CMP of Rs 5685 stock trades at 38.1x FY27E EPS.</p>
<p>Laxmi Organic Industries</p>	<p>Revenue up 13.3% at Rs 786 crore. EBITDA margin at 9.5% as compared to 7.5%. Net profit was up 8% at Rs 29.3 crore. PBT for the quarter increased 59% YoY at Rs 47 crore.</p>
<p>Housing & Urban Development Corp</p>	<p>The company signed a memorandum of understanding with the Vadhavan Port project to explore and provide funds up to Rs 25,000 crore for the development of new ports.</p>
<p>Laurus Labs</p>	<p>The US FDA issued a Form 483 with one observation to the company's US-based arm Laurus Generics. Laurus Generics Inc. (LGI), a wholly-owned foreign subsidiary of Laurus Labs, in Berkeley Heights, New Jersey, USA underwent a Post-marketing Adverse Drug Experience (PADE) inspection by US FDA.</p>



Stock	News
<p>Waaree Energies</p>	<p>The company's arm Waaree Solar Americas commences commercial production of 1.6 GW Solar Module line at Brookshire in the US.</p>
<p>Piramal Pharma</p>	<p>Piramal Critical Care (PCC), a division of Piramal Pharma announced the US launch of Chlorpromazine Hydrochloride for Injection, USP, which will be offered in 25mg/1mL and 50mg/2 mL vials.</p> <p>It further complements market-leading inhaled anesthesia products for the company.</p>
<p>Bharat Petroleum Q3FY25 result key takeaways</p>	<p>Bharat Petroleum Corp Ltd (BPCL) reported a lower-than-expected Q3FY25 profit, impacted by lower marketing margins and losses in its liquefied petroleum gas (LPG) segment. The company's standalone revenue from operations fell about 2% to Rs 113,135 crore and net profit rose about 37% to Rs 4649 crore in Q3FY25. Its average gross refining margin for April-December fell to \$5.95 per barrel from \$14.72 per barrel a year earlier. BPCL does not give quarterly margin numbers.</p>
<p>Mphasis Ltd Q3FY25 result preview</p>	<p>Mphasis likely to report 1.4% QoQ and 7.4% YoY growth in revenue to Rs 3585 crore in Rupee terms. In US\$ terms, revenue could rise by 0.8% QoQ and 5.5% YoY to US\$ 424 mn in Q3FY25. Net profit could fall by 1.2% QoQ and rise by 12% YoY to Rs 418 crore in Q3FY25. EBIT margin could inch down by 20bps QoQ and it could rise 40 bps YoY to 15.2%. The management commentary on deals and deal pipeline, pricing outlook, traction in digital technologies, and outlook on demand environment would be key monitorables.</p>
<p>Cyient Ltd Q3FY25 result preview</p>	<p>Cyient could report 2.7% QoQ revenue growth and it could fall by 0.2% YoY to Rs 1,489 crore in Rupee terms in Q3FY25. In US\$ term, revenue could increase by 2% QoQ and decrease by 1.5% YoY to US\$ 176 mn in Q3FY25. Net profit could fall by 14.2% QoQ and it could rise by 13.1% YoY to Rs 152 crore in Q3FY25. EBIT margin could fall by 50bps QoQ and 230bps YoY to 13.7%. The management commentary on deal pipeline, and client's status would be key monitorables.</p>



Key Events

Japan trade balance grows more than expected in Dec on strong exports:

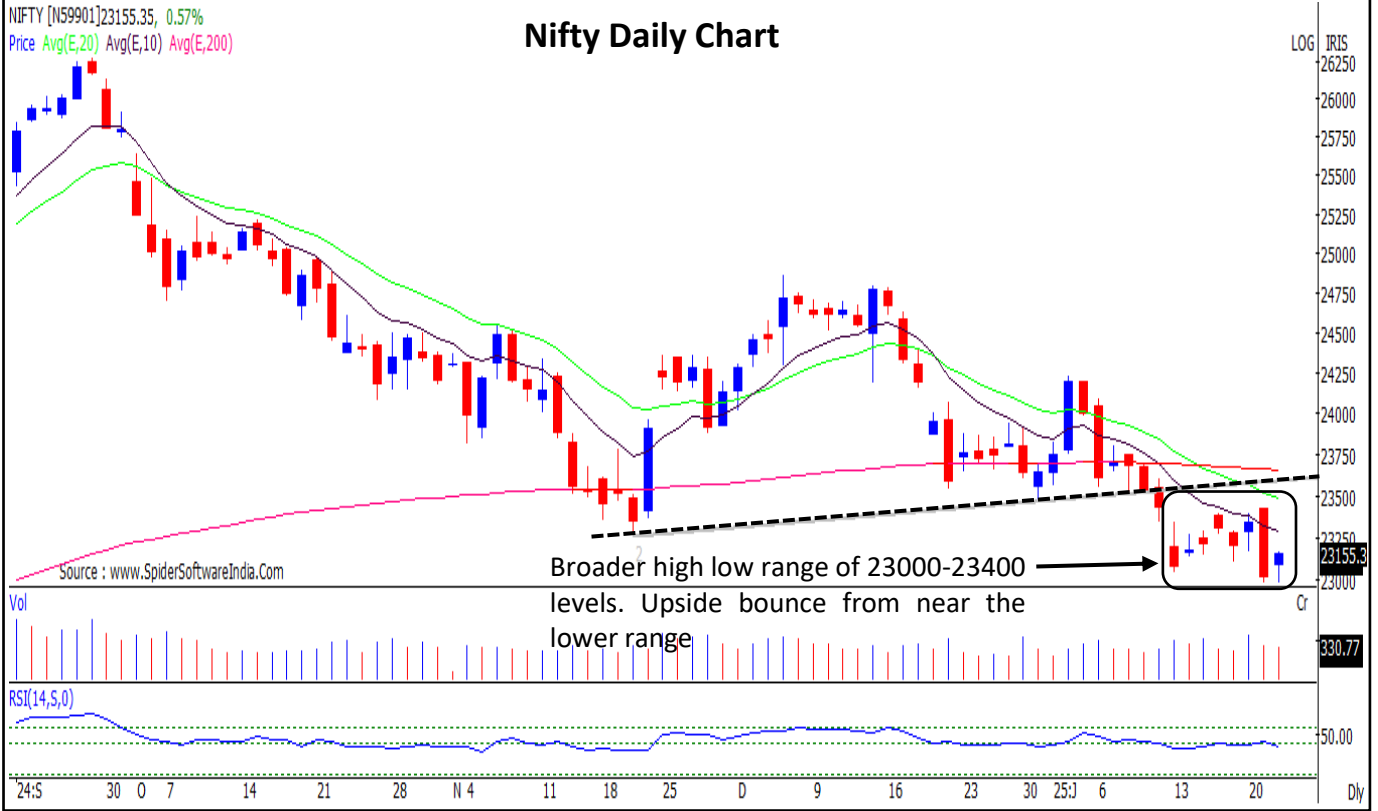
Japan's trade surplus grew more than expected in December, boosted chiefly by resilient exports to the U.S. and China. Trade balance grew to a surplus of 130.9 billion yen (\$840 million), compared to expectations for a deficit of 55 billion yen. Trade balance also swung into a surplus from a 110.3 billion yen deficit in November.

UK borrowing jumps in December as debt interest climbs

Britain ran a bigger-than-expected budget deficit in December, swelled by debt interest costs and a one-off purchase of military homes. Public sector net borrowing was 17.8 billion pounds (\$22 billion) in December, more than 10 billion pounds higher than a year earlier.



Nifty : Minor upside bounce from the lows, but the overall market breadth remains weak.



Nifty Smallcap 100 : Sharp down trend continuation pattern. Bearish lower tops and bottoms is intact.

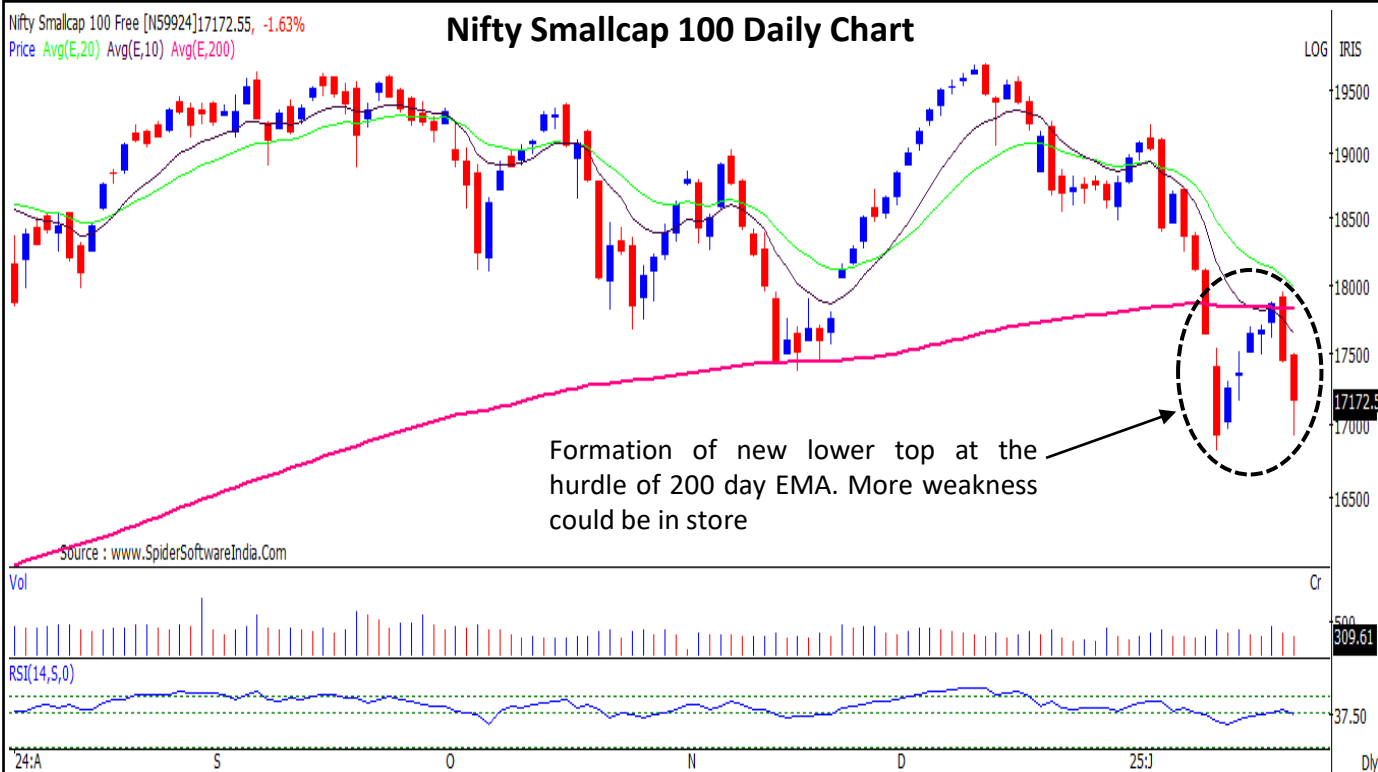


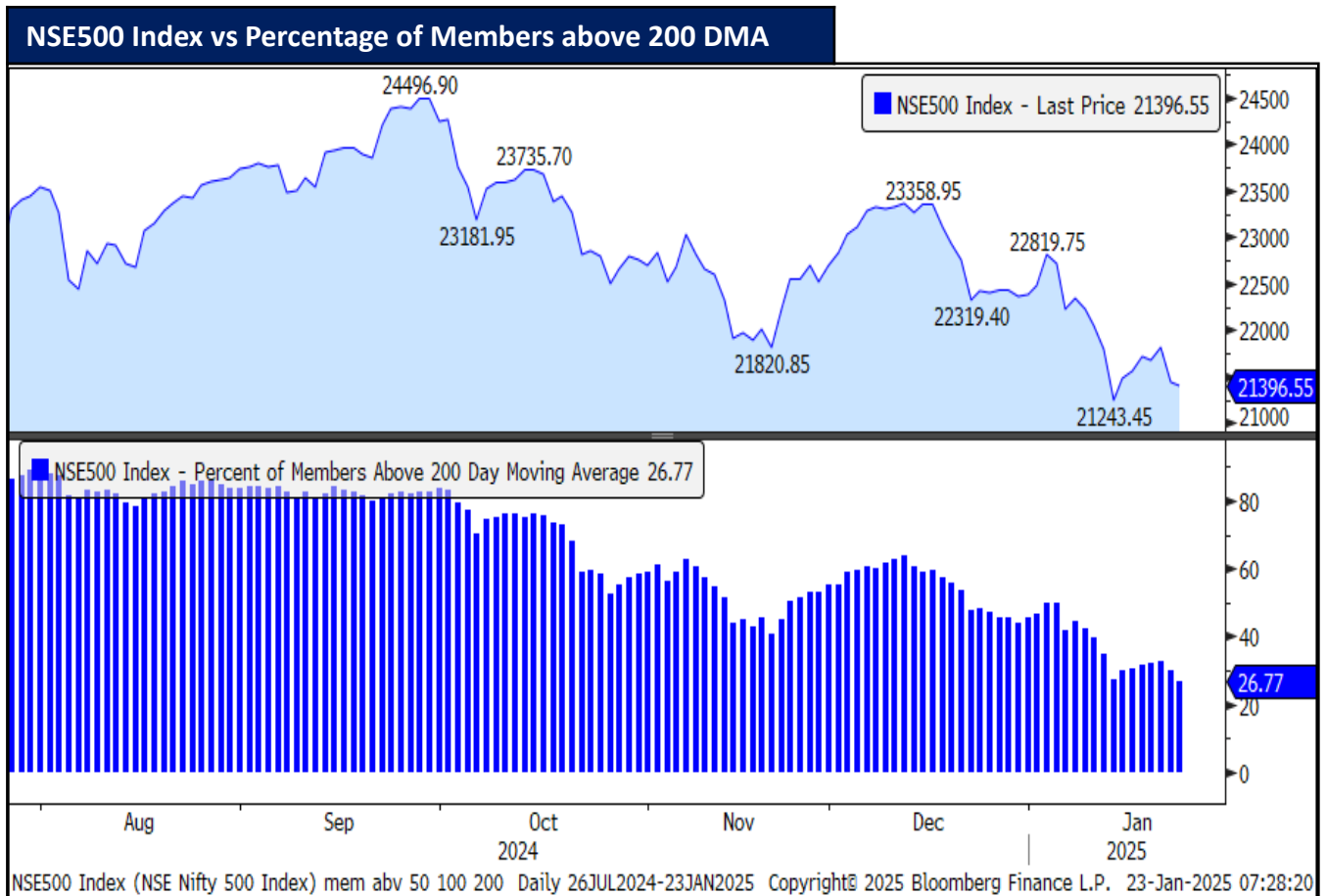


CHART WITH INTERESTING OBSERVATION:

NSE500 Index vs Percentage of Members above 200 DMA

Observation:

- The NSE500 Index is currently 4.6% below its 200-day moving average, signaling a weaker market trend. It's also about 13% off its 52-week high, showing a substantial decline from its peak. Moreover, just 26.77% of the index constituents are trading above their 200-day moving averages, indicating that most stocks in the index are struggling to maintain momentum. This points to a broad market underperformance, with many stocks facing challenges relative to their longer-term averages.



Source: Bloomberg, HSL Prime Research



F&O HIGHLIGHTS

LONG BUILD UP WAS SEEN IN THE NIFTY & BANK NIFTY FUTURES

Create Longs on dips with the SL Of 23000 Levels.

- After yesterday's drubbing, Nifty saw a pullback of 136 points, or 0.60%, to close at 23160. It was a volatile session that eventually ended in the green, led by gains in heavyweight sectors such as Information Technology (IT) and banking
- Long Build-Up was seen in the Nifty Futures where Open Interest rose by 0.52% with Nifty rising by 0.57%.
- Long Build-Up was seen in the Bank Nifty Futures where Open Interest rose by 2.45% with Bank Nifty rising by 0.32%.
- Nifty Open Interest Put Call ratio rose to 0.88 levels from 0.77 levels.
- Amongst the Nifty options (23-Jan Expiry), Call writing is seen at 23200-23300 levels, indicating Nifty is likely to find strong resistance in the vicinity of 23200-23300 levels. On the lower side, an immediate support is placed in the vicinity of 23000-23100 levels where we have seen Put writing.
- Short build-up was seen by FII's in the Index Futures segment where they net sold worth 971 cr with their Open Interest going up by 7467 contracts.

Index	Expected Trend	Prev. Close	Buy/Sell	Stop Loss	Target
NIFTY FUT	UP	23198.95	BUY @ 23100	23000	23250
BANK NIFTY FUT	UP	48887.65	BUY @ 48700	48500	49100

Nifty50 Snapshot			
	22-Jan-25	21-Jan-25	% Chg.
Nifty Spot	23155.35	23024.65	0.57
Nifty Futures	23198.95	23103.20	0.41
Premium/ (Discount)	43.60	78.55	N.A.
Open Interest (OI)	1.95	1.94	0.52
Nifty PCR	0.88	0.77	13.49

Bank Nifty Snapshot			
	22-Jan-25	21-Jan-25	% Chg.
Bank Nifty Spot	48724.40	48570.90	0.32
Bank Nifty Futures	48887.65	48763.25	0.26
Premium/ (Discount)	163.25	192.35	N.A.
Open Interest (OI)	0.37	0.36	2.45
Bank Nifty PCR	0.57	0.56	2.61

Nifty Options Highest OI (Weekly)			
CALL		PUT	
Strike Price	Open Interest	Strike Price	Open Interest
23500	10682550	23000	10441950



FII Activity On 22 Jan 2025

	BUY		SELL		NET (Rs Cr)	OPEN INTEREST	
	Contracts	Value (Rs Cr)	Contracts	Value (Rs Cr)		Contracts	Value (Rs Cr)
Index Futures	63991	4357	64342	5327	-971	539900	40221
Nifty Futures	35947	2273	32137	2703	-430	355988	26295
Bank Nifty Fut.	22569	1719	22749	2016	-297	103193	9041
Index Options	12102327	1627403	12420192	1677528	-50125	6438666	609728
Nifty Options	9079518	1410655	9270325	1451642	-40987	3994500	429031
Bank Nifty Opt.	2419164	180745	2524086	188618	-7873	2066875	158353
Stock Futures	471108	29520	447005	27740	1781	5683510	347227
Stock Options	1795637	117172	1826051	118759	-1587	1826141	111405

FII's Open Interest (Contracts)

Date	Index Futures	Nifty Futures	Bank nifty Futures	Index Options	Nifty Options	Bank Nifty Options	Stock Futures	Stock Options
22-Jan-24	539900	355988	103193	6438666	3994500	2066875	5683510	1826141
21-Jan-24	532433	357086	99033	5770743	3452673	1972421	5611445	1755409
Net Contracts	7467	-1098	4160	667923	541827	94454	72065	70732

Nifty Weekly (23 - Jan) Option Open Interest Distribution





Top Gainers OI Wise		
Company	Future OI (%)	Price (%)
KEI	40	2
INDIAMART	40	-7
DALBHARAT	36	2
POLICYBZR	24	-2
POLYCAB	23	-6

Top Losers OI Wise		
Company	Future OI (%)	Price (%)
COROMANDEL	-9	-4
DIXON	-8	-3
MCX	-6	4
BHARATFORG	-5	2
IGL	-5	-2

Top Gainers Price Wise		
Company	Future OI (%)	Price (%)
MCX	-6	4
WIPRO	3	4
INFY	-4	3
TCS	-3	3
TECHM	3	3

Top Losers Price Wise		
Company	Future OI (%)	Price (%)
INDIAMART	40	-7
LODHA	19	-6
POLYCAB	23	-6
ICICIPRULI	1	-6
GODREJPROP	1	-5

Long Buildup		
Company	Future OI (%)	Price (%)
KEI	40	2
DALBHARAT	36	2
BALKRISIND	11	1
PAGEIND	5	0
MARUTI	4	1

Short Buildup		
Company	Future OI (%)	Price (%)
INDIAMART	40	-7
POLICYBZR	24	-2
POLYCAB	23	-6
LODHA	19	-6
PRESTIGE	16	-5

Long Unwinding		
Company	Future OI (%)	Price (%)
COROMANDEL	-9	-4
DIXON	-8	-3
IGL	-5	-2
CDSL	-3	-1
SRF	-3	-2

Short Covering		
Company	Future OI (%)	Price (%)
MCX	-6	4
BHARATFORG	-5	2
INFY	-4	3
TCS	-3	3
CHAMBLFERT	-3	1

Securities In Ban For Trade – 23.01.2025

No.	Company Name	No.	Company Name
1.	ABFRL	6.	LTF
2.	BANDHANBNK	7.	MANAPPURAM
3.	CANFINHOME	8.	MGL
4.	DIXON	9.	PNB
5.	INDIAMART	10.	RBLBANK



Economic Calendar

Monday	Tuesday	Wednesday	Thursday	Friday
			January 23	January 24
			Japan: Trade Balance (Dec) US: Initial Jobless Claims (Jan 18), Continuing Claims (Jan 11), Kansas City Fed Mfg. Activity (Jan) EC: Consumer Confidence (Jan P)	Japan: Natl CPI YoY (Dec), BOJ Monetary Policy UK, Japan, India, EC, US: Composite, Mfg., Service PMI (Jan P) US: Uni. of Mich. Sentiment (Jan F), Existing Home Sales (Dec)



Result Calendar

Monday	Tuesday	Wednesday	Thursday	Friday
			January 23	January 24
			<ul style="list-style-type: none"> • AARNAV • ACGL • ADANIGREEN • ALIVUS • CAPRICORN • CGCL • CYIENT • DAICHI • DRREDDY • FERVENTSYN • FUTURSEC • GREAVESCOT • HINDPETRO • IEX • INDUSTOWER • IONEXCHANG • JAYNECOIND • JUMBO • KFINTECH • LKPFIN • LKPSEC • MANKIND • MEENST • MENONBE • MPHASIS • MPLSTD • NAM-INDIA • NATHBIOGEN • NDLVENTURE • NPL • PILITA • RAJRATAN • RESTILE • SENORES • SGMART • SHAQUAK • SONACOMS • SURYODAY • SYNGENE • TEJASNET • THYROCARE • TOKYOFIN • TOKYOPLAST • TTML • UJJIVANSFB • ULTRACEMCO • UNITDSPR • UNIVARTS • V2RETAIL • VANDANA • WSFX 	<ul style="list-style-type: none"> • 1STCUS • AAGAMCAP • ACL • ADORWELD • AGRITECH • ALKYLAMINE • ASALCBR • ASHSI • ATUL • AUBANK • AVONMERC • BANKINDIA • BHARATGEAR • BIRLAMONEY • BLAL • CENTRUM • CHEMBOND • CREDITACC • CYBERTECH • DAMCAPITAL • DCBBANK • DLF • DUNCANENG • EMSLIMITED • GARGI • GODREJCP • GOTHIPL • GRANULES • GREENPOWER • GRPLTD • HINDPETRO • IBINFO • INDIGO • INTELLECT • JINDALSAW • JSWSTEEL • LAURUSLABS • LMW • MEHAI • MNIL • NIITLTD • NURECA • OMAXAUTO • ORIENTCEM • PHOTOQUP • POCL • RESONANCE • RPGLIFE • SAGCEM • SAMPANN • SASKEN • SHAKTIPUMP • SHARDACROP • SHREDIGCEM • SOLARA • STEELXIND • SUPRIYA • SUVEN • TANFACIND • TORNTPHARM • TOTEM • TRABI • TREEHOUSE • TRIDENT • TTKHLTCARE • UGROCAP



OPEN SHORT TERM TRADING CALLS

NO.	RECO DT.	RECO	COMPANY NAME	ENTRY	CMP	SL	TARGET	UPSIDE %	VALID TILL
1	14-JAN-25	BUY	JSL	626.65-604	633.4	595.0	663	4.7	28-JAN-25
2	14-JAN-25	BUY	FEDERAL BANK	191.90-187.85	190.1	184.5	205	7.8	28-JAN-25
3	17-JAN-25	BUY	ONGC JAN FUT	267.30-261	264.1	256.0	281	6.4	31-JAN-25

OPEN E-MARGIN POSITIONAL CALLS

NO.	RECO DT.	RECO	COMPANY NAME	ENTRY	CMP	SL	TARGET 1	TARGET 2	UPSIDE %	VALID TILL
1	24-DEC-24	BUY	STAR HEALTH	486.75-462	459.5	447.0	535.0	575.0	25	24-MAR-25
2	21-JAN-25	BUY	TATA CONSUMER	967.6-932	967.4	907.0	1035.0	1090.0	13	21-FEB-25

MUHURAT TRADING MTF PICKS

NO.	RECO DT.	RECO	COMPANY NAME	ENTRY	CMP	SL	TARGET 1	TARGET 2	UPSIDE %	VALID TILL
1	28-OCT-24	BUY	KARUR VYSYA BANK	214-218	223.8	183.0	249.0	269.0	20	NEXT DIWALI

*= 1st Target Achieved



NSE 200 SUPPORT & RESISTANCE

SYMBOL	CLOSE	R2	R1	PIVOT	S1	S2	5 DMA	20 DMA	% Delivery	Trend
ABB	6279.7	6470.6	6375.1	6244.6	6149.1	6018.6	6384.4	6564.0	51.2	Bearish
ABCAPITAL	173.0	178.6	175.8	172.2	169.4	165.8	176.1	177.4	32.8	Bearish
ABFRL	279.1	289.2	284.1	278.4	273.3	267.6	278.0	275.4	33.9	Bullish
ACC	2000.8	2056.3	2028.5	1999.3	1971.5	1942.3	2005.4	2008.1	38.3	Bearish
AMBUJACEM	536.7	546.2	541.4	533.9	529.2	521.7	536.0	533.1	44.2	Bullish
ADANIPOWER	525.5	543.5	534.5	524.0	515.0	504.6	542.5	519.7	21.7	Bullish
ADANIGREEN	1031.7	1063.0	1047.3	1027.2	1011.5	991.4	1058.5	1024.4	27.8	Bullish
ADANITRANS	802.8	847.3	825.1	805.1	782.8	762.8	805.9	786.9	23.6	Bullish
ADANIENT	2376.6	2440.8	2408.7	2366.9	2334.8	2293.1	2406.3	2451.8	28.7	Bearish
ADANIPORTS	1102.3	1137.9	1120.1	1100.3	1082.5	1062.7	1134.3	1164.3	36.3	Bearish
ASHOKLEY	206.8	211.2	209.0	206.8	204.5	202.3	207.1	216.5	31.7	Bearish
ALKEM	5151.5	5321.2	5236.3	5151.3	5066.5	4981.5	5200.9	5396.4	61.1	Bearish
APOLLOHOSP	6892.9	7000.3	6946.6	6888.3	6834.6	6776.2	6842.1	7089.7	48.2	Bearish
ASIANPAINT	2262.1	2284.1	2273.1	2259.0	2248.0	2233.9	2255.9	2282.7	61.2	Bearish
APOLLOTYRE	439.0	462.5	450.8	441.7	430.0	420.9	449.3	486.6	36.8	Bearish
AUROPHARMA	1191.8	1209.7	1200.8	1185.8	1176.8	1161.8	1183.1	1246.0	53.2	Bearish
ASTRAL	1455.4	1489.4	1472.4	1451.8	1434.8	1414.1	1481.5	1560.6	52.4	Bearish
ATGL	655.4	683.3	669.3	655.9	642.0	628.6	668.8	692.8	23.2	Bearish
AUBANK	604.4	613.4	608.9	604.0	599.5	594.6	603.6	576.5	48.0	Bullish
AWL	267.4	273.4	270.4	266.4	263.4	259.4	267.4	300.5	59.9	Bearish
AXISBANK	959.3	984.8	972.0	963.0	950.3	941.3	989.3	1045.7	73.6	Bearish
BAJFINANCE	7397.2	7519.2	7458.2	7359.3	7298.3	7199.4	7314.2	7201.2	48.0	Bullish
BANDHANBNK	151.5	154.0	152.8	150.7	149.4	147.3	151.3	153.0	36.8	Bearish
BATAINDIA	1276.2	1313.9	1295.0	1277.8	1258.9	1241.6	1297.3	1369.3	37.7	Bearish
BHARTIARTL	1631.8	1650.2	1641.0	1631.8	1622.5	1613.3	1631.4	1607.1	67.9	Bullish
BEL	270.4	285.0	277.7	272.0	264.7	259.0	278.7	282.1	39.9	Bearish
BHEL	205.5	215.8	210.6	205.0	199.8	194.2	211.3	218.2	31.5	Bearish
BHARATFORG	1226.5	1256.9	1241.7	1213.9	1198.6	1170.8	1211.6	1248.1	63.6	Bearish
BALKRISIND	2708.5	2764.7	2736.6	2690.9	2662.8	2617.1	2708.5	2765.2	50.5	Bearish
BIOCON	388.1	399.1	393.6	386.8	381.3	374.6	393.4	374.4	28.1	Bullish
BAJAJ-AUTO	8460.9	8603.6	8532.2	8463.6	8392.3	8323.7	8527.4	8723.5	61.0	Bearish
BAJAJFINSV	1743.3	1769.9	1756.6	1733.6	1720.3	1697.2	1714.7	1667.5	49.0	Bullish
BAJAJHLDNG	11286.4	11732.9	11509.6	11200.2	10977.0	10667.6	10936.9	11212.7	14.0	Bearish
BANKBARODA	228.4	235.2	231.8	227.7	224.2	220.1	229.4	232.9	46.1	Bearish
BANKINDIA	99.0	102.1	100.6	98.7	97.2	95.3	100.1	99.7	23.5	Bearish
ABBOTINDIA	27774.5	28108.8	27941.6	27682.8	27515.7	27256.9	27663.2	28888.5	44.7	Bearish
BOSCHLTD	30582.7	31215.0	30898.8	30551.5	30235.3	29888.0	31016.9	32601.6	44.8	Bearish
BPCL	277.6	287.9	282.8	278.4	273.3	268.9	275.1	282.7	30.9	Bearish
BERGEPAIN	476.1	482.7	479.4	474.5	471.2	466.3	470.7	458.8	50.2	Bullish
BRITANNIA	4956.7	5030.4	4993.5	4938.4	4901.5	4846.4	4889.0	4848.5	63.4	Bullish
CANBK	97.8	101.6	99.7	97.7	95.8	93.8	98.7	97.7	37.6	Bullish
CONCOR	756.1	771.3	763.7	752.0	744.4	732.8	766.9	767.5	50.2	Bearish
CGPOWER	637.3	690.9	664.1	639.5	612.7	588.2	651.1	687.9	65.2	Bearish
CHOLAFIN	1257.1	1302.1	1279.6	1255.5	1233.0	1209.0	1256.8	1248.9	57.7	Bullish
CIPLA	1439.4	1454.3	1446.8	1433.5	1426.1	1412.8	1439.7	1480.0	52.5	Bearish
COLPAL	2771.6	2806.1	2788.8	2765.4	2748.1	2724.7	2709.6	2743.9	60.4	Bearish
COALINDIA	379.2	388.5	383.9	379.3	374.6	370.0	382.9	380.1	52.4	Bearish
COFORGE	8228.2	8467.6	8347.9	8245.3	8125.6	8022.9	8504.9	9166.1	30.3	Bearish
COROMANDEL	1776.7	1904.6	1840.6	1790.3	1726.4	1676.1	1845.8	1884.0	51.1	Bearish
CROMPTON	347.0	357.7	352.4	347.4	342.0	337.0	357.1	369.7	61.2	Bearish



NSE 200 SUPPORT & RESISTANCE

SYMBOL	CLOSE	R2	R1	PIVOT	S1	S2	5 DMA	20 DMA	% Delivery	Trend
DABUR	520.5	527.8	524.2	520.9	517.3	514.0	522.4	514.6	57.7	Bullish
DALBHARAT	1799.1	1872.6	1835.8	1768.9	1732.2	1665.3	1757.0	1762.5	31.9	Bearish
DELHIVERY	322.3	340.0	331.2	321.8	312.9	303.5	333.5	337.7	36.7	Bearish
DEVYANI	182.1	186.7	184.4	180.3	178.0	173.9	182.9	186.0	30.8	Bearish
DIVISLAB	5812.5	5896.7	5854.6	5804.8	5762.7	5712.9	5892.8	5925.3	79.1	Bearish
DIXON	14714.5	15704.4	15209.5	14744.7	14249.8	13785.0	16316.3	17217.6	22.0	Bearish
DLF	713.8	763.9	738.9	719.8	694.8	675.7	740.4	781.5	51.1	Bearish
LALPATHLAB	2842.9	2884.8	2863.8	2829.1	2808.1	2773.4	2816.2	2920.2	31.6	Bearish
DMART	3561.6	3662.9	3612.2	3568.4	3517.7	3473.9	3597.1	3653.7	48.1	Bearish
DEEPAKNTR	2315.5	2387.3	2351.4	2310.8	2274.9	2234.2	2349.9	2429.9	27.2	Bearish
DRREDDY	1296.3	1317.4	1306.8	1297.4	1286.8	1277.4	1299.8	1345.7	44.1	Bearish
EICHERMOT	5009.7	5067.8	5038.7	4996.0	4966.9	4924.2	5011.3	5037.8	61.6	Bearish
ESCORTS	3570.8	3641.9	3606.3	3577.9	3542.3	3513.9	3575.0	3396.6	52.6	Bullish
FEDERALBNK	190.1	196.9	193.5	190.0	186.6	183.1	192.7	195.9	51.3	Bearish
FLUOROCHEM	3679.8	3889.3	3784.5	3695.3	3590.6	3501.4	3773.3	3954.7	39.9	Bearish
FORTIS	629.6	650.3	640.0	631.8	621.5	613.3	646.2	687.3	60.8	Bearish
GAIL	176.5	184.8	180.6	176.4	172.3	168.1	180.0	184.6	50.5	Bearish
GODREJCP	1153.0	1184.0	1168.5	1153.0	1137.5	1122.1	1163.2	1131.1	70.2	Bullish
GLAND	1633.6	1680.8	1657.2	1642.3	1618.7	1603.9	1664.9	1765.9	42.7	Bearish
GODREJPROP	2240.6	2453.7	2347.1	2273.6	2167.0	2093.5	2361.2	2550.3	44.6	Bearish
GRASIM	2388.2	2411.1	2399.6	2385.0	2373.5	2358.8	2376.8	2414.2	52.1	Bearish
GUJGASLTD	495.1	507.7	501.4	495.0	488.7	482.3	496.7	498.5	35.2	Bearish
HAVELLS	1553.7	1596.2	1574.9	1555.2	1534.0	1514.3	1572.8	1616.9	53.2	Bearish
HCLTECH	1827.7	1848.5	1838.1	1821.1	1810.7	1793.7	1800.3	1886.7	62.7	Bearish
HDFCAMC	3951.1	4113.1	4032.1	3978.8	3897.8	3844.5	4028.6	4079.5	63.3	Bearish
HDFCBANK	1666.1	1700.9	1683.5	1654.5	1637.0	1608.0	1649.7	1703.9	53.0	Bearish
HDFCLIFE	618.2	636.1	627.2	620.0	611.1	603.9	632.0	618.1	51.6	Bullish
HEROMOTOCO	4055.7	4096.6	4076.1	4051.6	4031.1	4006.6	4068.9	4148.5	50.5	Bearish
HAL	3903.5	4191.8	4047.6	3933.8	3789.6	3675.8	4035.4	4071.2	35.8	Bearish
HINDALCO	613.5	621.5	617.5	611.4	607.4	601.4	613.2	597.7	55.9	Bullish
HINDPETRO	370.1	380.8	375.5	369.3	364.0	357.8	363.5	387.0	40.5	Bearish
HINDUNILVR	2343.0	2375.5	2359.2	2345.7	2329.4	2315.9	2345.5	2370.4	77.0	Bearish
HONAUT	40496.0	41203.3	40849.6	40444.8	40091.2	39686.4	40536.9	41437.7	35.5	Bearish
HINDZINC	469.4	477.8	473.6	466.6	462.4	455.5	461.6	448.3	49.4	Bullish
ICICIBANK	1200.5	1215.6	1208.0	1199.9	1192.3	1184.2	1220.8	1257.6	67.1	Bearish
ICICIGI	1849.9	1946.9	1898.4	1870.4	1821.9	1793.9	1906.4	1859.2	71.4	Bearish
IDEA	9.5	9.8	9.7	9.4	9.2	9.0	9.4	8.3	31.1	Bullish
IDFCFIRSTB	62.8	64.4	63.6	62.6	61.8	60.8	63.0	62.7	47.2	Bullish
IGL	387.5	408.0	397.8	387.9	377.7	367.8	397.6	409.2	38.3	Bearish
INDHOTEL	772.8	788.6	780.7	766.1	758.2	743.6	790.2	829.1	52.9	Bearish
INDUSINDBK	971.0	994.3	982.6	965.9	954.2	937.5	969.7	966.8	57.0	Bullish
INDIANB	521.2	535.8	528.5	520.3	513.0	504.8	526.1	517.7	38.6	Bullish
INDIGO	4011.5	4166.7	4089.1	4017.1	3939.5	3867.4	4067.5	4295.3	63.8	Bearish
INDUSTOWER	357.1	369.2	363.2	355.8	349.8	342.4	362.3	342.1	51.2	Bullish
INFY	1856.5	1903.1	1879.8	1842.5	1819.1	1781.8	1842.9	1907.1	56.3	Bearish
NAUKRI	7234.5	7684.7	7459.6	7298.3	7073.2	6912.0	7567.8	8130.6	68.0	Bearish
IOC	130.5	134.7	132.6	130.5	128.4	126.4	129.5	132.3	36.3	Bearish
IPCALAB	1559.3	1589.1	1574.2	1547.6	1532.7	1506.2	1549.1	1634.0	39.4	Bearish
ICICIPRULI	598.1	644.7	621.4	596.7	573.4	548.7	634.4	648.7	34.9	Bearish
IRCTC	770.7	797.9	784.3	770.7	757.1	743.5	777.4	775.3	30.8	Bearish



NSE 200 SUPPORT & RESISTANCE

SYMBOL	CLOSE	R2	R1	PIVOT	S1	S2	5 DMA	20 DMA	% Delivery	Trend
IRFC	140.3	145.9	143.1	139.9	137.1	133.9	143.7	144.2	19.9	Bearish
ITC	437.0	443.9	440.5	438.5	435.1	433.1	437.1	445.8	58.0	Bearish
JINDALSTEL	896.8	951.0	923.9	900.6	873.5	850.2	918.4	925.7	41.0	Bearish
JSWSTEEL	919.4	944.4	931.9	919.5	907.0	894.7	916.2	907.1	37.4	Bullish
JSWENERGY	550.0	571.1	560.6	550.9	540.4	530.7	565.1	589.7	55.5	Bearish
JUBLFOOD	664.7	683.0	673.8	664.9	655.7	646.8	683.0	719.6	46.3	Bearish
CUMMINSIND	2883.8	2979.5	2931.6	2877.2	2829.3	2774.9	2918.2	3088.4	56.2	Bearish
KOTAKBANK	1917.5	1941.8	1929.7	1908.4	1896.2	1874.9	1859.1	1797.2	58.1	Bullish
LAURUSLABS	570.9	596.7	583.8	569.2	556.2	541.6	571.5	587.5	37.1	Bearish
LICHSGFIN	554.8	571.6	563.2	554.4	546.0	537.2	562.7	576.6	39.3	Bearish
LICI	828.6	855.0	841.8	830.2	817.0	805.5	844.9	864.1	34.7	Bearish
LUPIN	2139.2	2181.7	2160.4	2124.8	2103.5	2067.9	2117.2	2232.2	56.4	Bearish
LT	3518.2	3622.5	3570.3	3530.2	3478.1	3438.0	3545.8	3576.5	60.9	Bearish
LTF	139.4	149.0	144.2	141.1	136.3	133.2	143.1	139.7	34.3	Bearish
LTIM	5849.9	5986.1	5918.0	5805.0	5736.9	5623.9	5860.5	5803.9	37.4	Bullish
LTTS	5383.0	5467.4	5425.2	5357.8	5315.6	5248.3	5351.0	4933.5	25.8	Bullish
MANKIND	2516.4	2628.0	2572.2	2530.1	2474.3	2432.2	2586.1	2764.3	48.5	Bearish
MFSL	1038.8	1093.3	1066.0	1042.7	1015.5	992.2	1063.8	1085.9	52.1	Bearish
MAXHEALTH	1066.4	1100.1	1083.3	1065.9	1049.1	1031.7	1057.2	1122.8	54.6	Bearish
M&M	2826.5	2874.1	2850.3	2828.1	2804.2	2782.0	2886.8	3024.1	64.1	Bearish
M&MFIN	265.9	271.5	268.7	264.1	261.3	256.7	267.4	269.8	24.1	Bearish
MOTHERSON	142.7	149.3	146.0	143.3	140.0	137.3	147.8	151.3	61.7	Bearish
MPHASIS	2809.0	2852.3	2830.6	2792.3	2770.6	2732.2	2805.3	2854.9	60.8	Bearish
MARICO	665.4	674.6	670.0	665.4	660.8	656.3	661.2	653.6	55.7	Bullish
MRF	111599.9	114187.4	112893.7	111709.6	110415.9	109231.8	113179.2	120838.8	29.0	Bearish
MARUTI	12020.4	12178.6	12099.5	11999.8	11920.7	11821.0	12030.6	11624.4	60.3	Bullish
MSUMI	54.8	57.1	56.0	55.2	54.0	53.2	56.1	57.2	59.2	Bearish
MUTHOOT FIN	2197.5	2244.4	2220.9	2181.1	2157.6	2117.8	2166.9	2157.9	39.4	Bullish
NESTLEIND	2207.8	2223.8	2215.8	2205.0	2197.0	2186.2	2201.0	2201.5	53.5	Bearish
NAVINFLUOR	3687.4	3907.9	3797.6	3704.4	3594.2	3501.0	3756.8	3528.3	37.3	Bullish
NHPC	77.8	80.6	79.2	77.9	76.5	75.2	79.2	79.2	40.0	Bearish
NMDC	65.7	68.7	67.2	65.5	64.0	62.3	66.3	65.9	41.0	Bearish
NTPC	322.4	331.9	327.2	322.3	317.5	312.6	326.9	326.0	50.1	Bearish
NYKAA	165.3	172.0	168.6	165.6	162.2	159.1	170.7	167.7	36.4	Bearish
OBEROIRLTY	1763.2	1910.7	1836.9	1784.2	1710.4	1657.7	1915.6	2136.8	31.6	Bearish
OFSS	9593.2	10257.7	9925.4	9702.7	9370.5	9147.8	9918.7	11475.1	41.1	Bearish
OIL	454.4	486.0	470.2	459.2	443.4	432.5	471.6	458.6	54.9	Bearish
ONGC	264.1	268.7	266.4	264.1	261.7	259.4	265.8	255.5	52.7	Bullish
PAGEIND	46073.4	47119.6	46596.5	46148.2	45625.1	45176.9	46085.7	47021.5	61.1	Bearish
PATANJALI	1864.6	1924.3	1894.4	1845.1	1815.3	1766.0	1846.5	1823.3	42.4	Bullish
PAYTM	841.4	879.7	860.5	838.6	819.4	797.5	877.9	923.0	17.3	Bearish
PRESTIGE	1319.3	1430.8	1375.1	1336.2	1280.5	1241.6	1418.8	1549.6	57.0	Bearish
PGHH	14693.5	14924.4	14808.9	14724.8	14609.3	14525.2	14765.5	14705.9	59.4	Bearish
PIIND	3500.7	3605.8	3553.2	3509.4	3456.8	3413.0	3529.9	3603.1	61.3	Bearish
PIDILITIND	2754.8	2788.2	2771.5	2748.3	2731.6	2708.4	2778.1	2863.7	62.0	Bearish
PEL	993.7	1032.6	1013.1	994.8	975.3	957.0	1017.1	1049.0	45.5	Bearish
PETRONET	322.7	331.7	327.2	322.7	318.2	313.8	324.6	330.4	60.9	Bearish
PNB	98.2	103.0	100.6	98.4	96.0	93.9	100.0	101.1	34.5	Bearish
POLICYBZR	1610.7	1725.3	1668.0	1607.6	1550.3	1490.0	1709.9	1929.2	49.2	Bearish
POLYCAB	6164.4	6874.7	6519.5	6250.8	5895.6	5626.8	6595.3	6862.4	23.8	Bearish



NSE 200 SUPPORT & RESISTANCE

SYMBOL	CLOSE	R2	R1	PIVOT	S1	S2	5 DMA	20 DMA	% Delivery	Trend
POONAWALLA	327.1	334.9	331.0	323.9	320.0	312.9	319.1	315.8	38.7	Bullish
PFC	420.6	436.0	428.3	420.3	412.6	404.7	430.9	436.0	42.7	Bearish
PERSISTENT	5683.2	6094.4	5888.8	5666.9	5461.3	5239.4	5940.7	6214.1	42.9	Bearish
POWERGRID	297.6	305.1	301.3	298.6	294.8	292.1	301.3	304.2	66.9	Bearish
RECLTD	462.1	490.6	476.3	464.8	450.5	439.0	479.4	493.3	57.3	Bearish
RELIANCE	1277.1	1290.4	1283.8	1276.2	1269.6	1262.0	1285.0	1247.7	70.5	Bullish
SAIL	107.1	113.1	110.1	107.4	104.4	101.8	108.6	110.0	23.0	Bearish
SBICARD	756.6	773.6	765.1	755.7	747.2	737.8	754.9	720.2	50.6	Bullish
SBILIFE	1460.1	1481.0	1470.5	1460.3	1449.8	1439.6	1496.1	1456.1	49.7	Bullish
SBIN	753.5	776.5	765.0	751.5	740.0	726.5	764.4	773.3	35.0	Bearish
SHRIRAMFIN	518.7	535.3	527.0	520.0	511.7	504.7	525.8	560.9	50.0	Bearish
SIEMENS	5856.5	6072.0	5964.2	5872.1	5764.4	5672.3	6022.0	6267.3	48.2	Bearish
SONACOMS	531.4	567.4	549.4	539.0	521.0	510.6	562.3	577.8	63.9	Bearish
SHREECEM	25292.6	25651.3	25471.9	25248.7	25069.3	24846.1	25251.6	25668.2	56.6	Bearish
SRF	2523.2	2632.7	2577.9	2532.5	2477.7	2432.3	2580.1	2418.5	53.1	Bullish
SUNPHARMA	1799.0	1821.9	1810.4	1792.1	1780.7	1762.4	1778.0	1820.2	61.1	Bearish
SUNTV	645.6	658.2	651.9	642.4	636.1	626.7	647.7	667.4	42.2	Bearish
SYNGENE	828.2	852.0	840.1	829.0	817.1	806.0	823.7	848.1	38.5	Bearish
TATASTEEL	128.9	132.0	130.5	128.8	127.2	125.6	129.7	132.4	43.8	Bearish
TATACONSUM	967.4	992.6	980.0	969.1	956.5	945.5	958.4	945.0	50.2	Bullish
TATACOMM	1678.0	1777.6	1727.8	1658.0	1608.1	1538.3	1702.1	1702.9	21.0	Bearish
TCS	4156.6	4240.3	4198.4	4121.3	4079.5	4002.4	4107.0	4092.2	53.0	Bullish
TECHM	1684.0	1722.8	1703.4	1669.3	1649.9	1615.8	1669.4	1683.9	58.2	Bearish
TATAELXSI	6167.4	6252.7	6210.0	6135.4	6092.7	6018.1	6183.5	6430.2	47.4	Bearish
TIINDIA	3234.0	3465.3	3349.6	3276.8	3161.2	3088.4	3356.7	3467.3	57.1	Bearish
TORNTPOWER	1390.0	1480.3	1435.2	1404.7	1359.5	1329.0	1456.1	1444.2	54.7	Bearish
TATAPOWER	358.9	376.4	367.6	359.9	351.1	343.4	368.3	376.4	38.9	Bearish
RAMCOCEM	868.9	898.7	883.8	868.7	853.8	838.7	879.2	927.2	48.6	Bearish
TRENT	5626.4	5827.5	5726.9	5647.5	5546.9	5467.5	5976.3	6619.6	53.0	Bearish
TRIDENT	31.5	32.5	32.0	31.5	31.0	30.5	32.0	32.4	35.3	Bearish
TORNTPHARM	3166.9	3220.6	3193.8	3157.9	3131.0	3095.1	3168.2	3302.5	53.6	Bearish
TITAN	3356.5	3409.1	3382.8	3358.7	3332.4	3308.4	3353.3	3371.0	52.7	Bearish
TATACHEM	954.1	979.0	966.5	953.8	941.3	928.6	966.7	999.8	43.8	Bearish
TTML	75.9	80.3	78.1	76.2	74.0	72.1	75.8	74.4	20.1	Bullish
TATAMOTORS	742.8	780.9	761.8	746.4	727.4	712.0	766.4	765.3	33.9	Bearish
TVSMOTOR	2273.3	2340.4	2306.8	2275.5	2241.9	2210.6	2287.5	2342.1	53.8	Bearish
UBL	2064.0	2140.9	2102.4	2046.2	2007.8	1951.6	2013.8	2030.3	38.3	Bearish
UNIONBANK	110.0	112.2	111.1	109.5	108.4	106.9	110.0	112.8	50.9	Bearish
UNITDSPR	1458.7	1522.4	1490.5	1466.1	1434.3	1409.9	1439.2	1543.8	26.7	Bearish
UPL	542.7	557.2	549.9	540.8	533.5	524.4	547.6	530.1	47.2	Bullish
ULTRACEMCO	10693.8	10890.5	10792.1	10699.4	10601.1	10508.4	10640.4	11104.3	49.2	Bearish
VBL	534.6	557.4	546.0	535.4	524.0	513.3	552.0	600.1	53.2	Bearish
VEDL	451.5	465.7	458.6	448.8	441.7	431.8	454.1	445.3	44.9	Bullish
VOLTAS	1487.1	1534.9	1511.0	1488.0	1464.1	1441.1	1544.5	1687.7	51.7	Bearish
WHIRLPOOL	1573.6	1625.5	1599.5	1583.1	1557.1	1540.7	1639.0	1736.5	59.2	Bearish
WIPRO	309.1	316.8	313.0	306.2	302.3	295.5	295.5	297.6	32.7	Bearish
YESBANK	18.4	19.1	18.7	18.3	18.0	17.6	18.5	18.8	21.5	Bearish
ZEEL	118.0	123.7	120.8	118.5	115.7	113.4	120.7	124.0	46.3	Bearish
ZOMATO	216.5	227.2	221.8	212.8	207.5	198.5	232.3	253.0	37.2	Bearish
ZYDUSLIFE	978.5	1002.7	990.6	977.2	965.1	951.7	988.5	983.0	51.7	Bearish

**Disclaimer:**

This report has been prepared by HDFC Securities Ltd and is solely for information of the recipient only. The report must not be used as a singular basis of any investment decision. The views herein are of a general nature and do not consider the risk appetite or the particular circumstances of an individual investor; readers are requested to take professional advice before investing. Nothing in this document should be construed as investment advice. Each recipient of this document should make such investigations as they deem necessary to arrive at an independent evaluation of an investment in securities of the companies referred to in this document (including merits and risks) and should consult their own advisors to determine merits and risks of such investment. The information and opinions contained herein have been compiled or arrived at, based upon information obtained in good faith from sources believed to be reliable. Such information has not been independently verified and no guaranty, representation of warranty, express or implied, is made as to its accuracy, completeness or correctness. All such information and opinions are subject to change without notice. Descriptions of any company or companies or their securities mentioned herein are not intended to be complete. HSL is not obliged to update this report for such changes. HSL has the right to make changes and modifications at any time.

This report is not directed to, or intended for display, downloading, printing, reproducing or for distribution to or use by, any person or entity who is a citizen or resident or located in any locality, state, country or other jurisdiction where such distribution, publication, reproduction, availability or use would be contrary to law or regulation or what would subject HSL or its affiliates to any registration or licensing requirement within such jurisdiction.

If this report is inadvertently sent or has reached any person in such country, especially, United States of America, the same should be ignored and brought to the attention of the sender. This document may not be reproduced, distributed or published in whole or in part, directly or indirectly, for any purposes or in any manner.

Foreign currencies denominated securities, wherever mentioned, are subject to exchange rate fluctuations, which could have an adverse effect on their value or price, or the income derived from them. In addition, investors in securities such as ADRs, the values of which are influenced by foreign currencies effectively assume currency risk. It should not be considered to be taken as an offer to sell or a solicitation to buy any security.

This document is not, and should not, be construed as an offer or solicitation of an offer, to buy or sell any securities or other financial instruments. This report should not be construed as an invitation or solicitation to do business with HSL. HSL may from time to time solicit from, or perform broking, or other services for, any company mentioned in this mail and/or its attachments.

HSL and its affiliated company(ies), their directors and employees may; (a) from time to time, have a long or short position in, and buy or sell the securities of the company(ies) mentioned herein or (b) be engaged in any other transaction involving such securities and earn brokerage or other compensation or act as a market maker in the financial instruments of the company(ies) discussed herein or act as an advisor or lender/borrower to such company(ies) or may have any other potential conflict of interests with respect to any recommendation and other related information and opinions.

HSL, its directors, analysts or employees do not take any responsibility, financial or otherwise, of the losses or the damages sustained due to the investments made or any action taken on basis of this report, including but not restricted to, fluctuation in the prices of shares and bonds, changes in the currency rates, diminution in the NAVs, reduction in the dividend or income, etc.

HSL and other group companies, its directors, associates, employees may have various positions in any of the stocks, securities and financial instruments dealt in the report, or may make sell or purchase or other deals in these securities from time to time or may deal in other securities of the companies / organizations described in this report. As regards the associates of HSL please refer the website.

HSL or its associates might have managed or co-managed public offering of securities for the subject company or might have been mandated by the subject company for any other assignment in the past twelve months.

HSL or its associates might have received any compensation from the companies mentioned in the report during the period preceding twelve months from the date of this report for services in respect of managing or co-managing public offerings, corporate finance, investment banking or merchant banking, brokerage services or other advisory service in a merger or specific transaction in the normal course of business.



HSL or its analysts did not receive any compensation or other benefits from the companies mentioned in the report or third party in connection with preparation of the research report. Accordingly, neither HSL nor Research Analysts have any material conflict of interest at the time of publication of this report. Compensation of our Research Analysts is not based on any specific merchant banking, investment banking or brokerage service transactions. HSL may have issued other reports that are inconsistent with and reach different conclusion from the information presented in this report. Research entity has not been engaged in market making activity for the subject company. Research analyst has not served as an officer, director or employee of the subject company. We have not received any compensation/benefits from the subject company or third party in connection with the Research Report.

Please note that HDFC Securities has a proprietary trading desk. This desk maintains an arm's length distance with the Research team and all its activities are segregated from Research activities. The proprietary desk operates independently, potentially leading to investment decisions that may deviate from research views.

HDFC securities Limited, I Think Techno Campus, Building - B, "Alpha", Office Floor 8, Near Kanjurmarg Station, Opp. Crompton Greaves, Kanjurmarg (East), Mumbai 400 042 Phone: (022) 3075 3400 Fax: (022) 2496 5066

Compliance Officer: Murli V Karkera Email: complianceofficer@hdfcsec.com Phone: (022) 3045 3600

For grievance redressal contact Customer Care Team Email: customer care@hdfcsec.com Phone: (022) 3901 9400

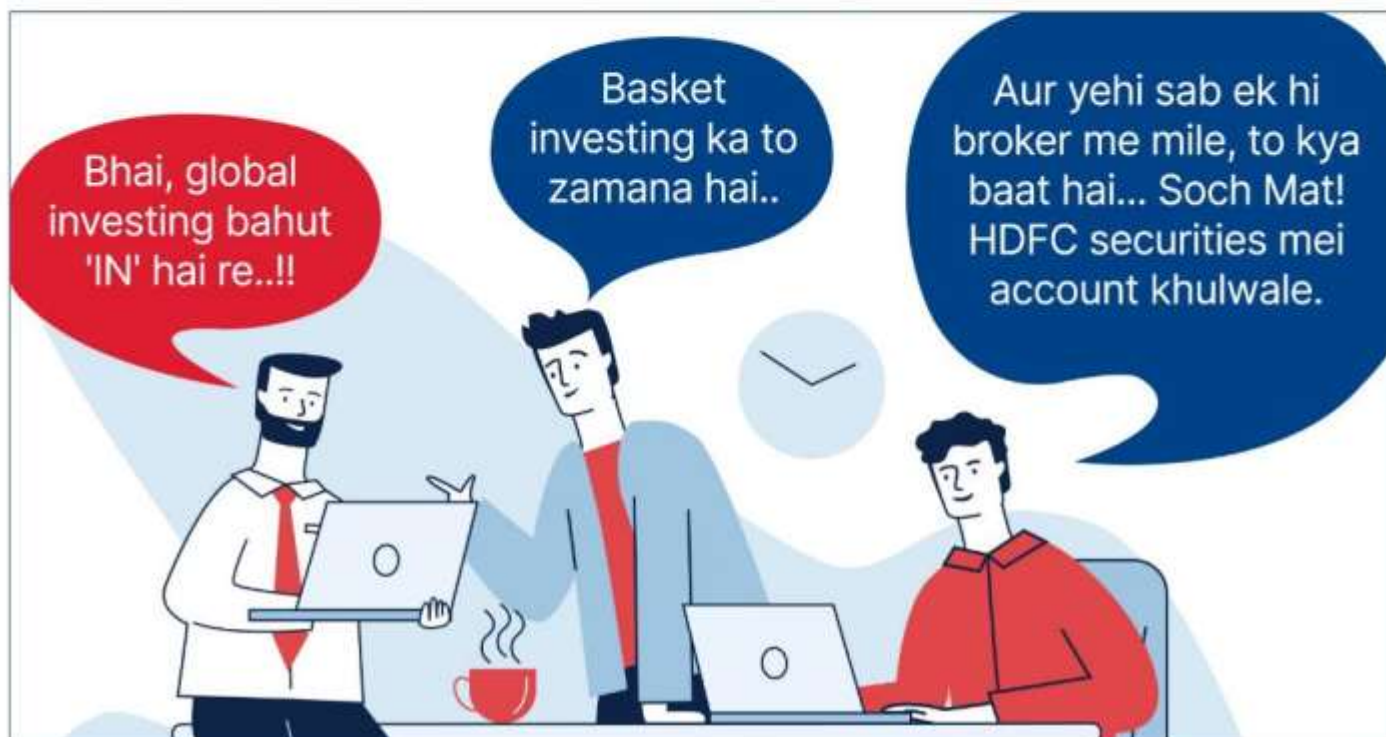
HDFC Securities Limited, SEBI Reg. No.: NSE, BSE, MSEI, MCX: INZ000186937; AMFI Reg. No. ARN: 13549; PFRDA Reg. No. POP: 11092018; IRDA Corporate Agent License No.: CA0062; SEBI Research Analyst Reg. No.: INH000002475; SEBI Investment Adviser Reg. No.: INA000011538; CIN - U67120MH2000PLC152193

Investment in securities market are subject to market risks. Read all the related documents carefully before investing.

Mutual Funds Investments are subject to market risk. Please read the offer and scheme related documents carefully before investing.

Registration granted by SEBI, membership of BASL (in case of IAs) and certification from NISM in no way guarantee performance of the intermediary or provide any assurance of returns to investors.

#HDFCsecMythBusters



**Scan the code to
download our mobile app now!**

Global Investing, Basket Investing are not a Exchange traded product and all disputes related to the distribution activity of Global Investing and Basket Investing will not have access to Exchange investor redressal forum or Arbitration mechanism. Involvement of HDFC securities is restricted to Referral only. HDFC securities does not offer this product directly to customers <https://www.hdfcsec.com/globalinvesting>. Account would be opened after all procedure relating to IPV and client due diligence is completed. Investment in securities market are subject to market risks, read all the related documents carefully before investing. SEBI registration & disclaimers: <https://www.hdfcsec.com/article/disclaimer-1795>.
The information is only for consumption by the client and such material should not be redistributed.